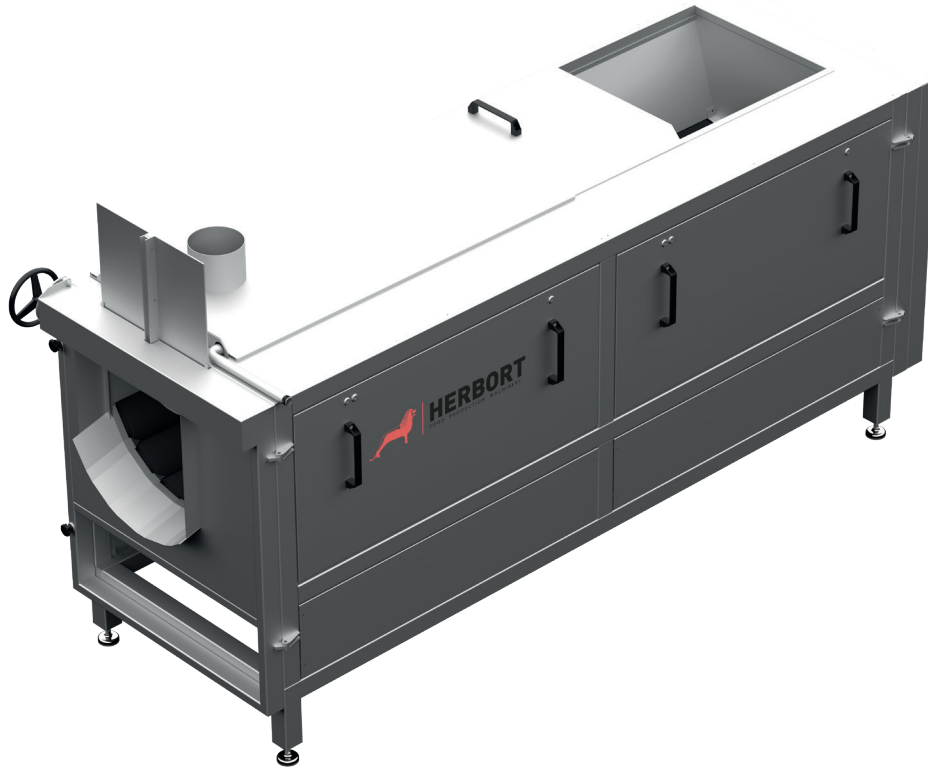




**PEELING**

# Brush Peeler 810



## Suitable for



Root vegetables

## Working principle

The Brush Peeler 810 is specifically designed for **washing and peeling horseradish and similar root vegetables**. With a capacity of 500 to 1,000 kg per hour, it delivers consistent results, adapting to the condition of the product and the desired cleaning intensity.

The product lies directly on trough-shaped brush rollers, ensuring thorough circulation for effective cleaning, even in hard-to-reach areas. A slide valve on the outlet allows easy batch operation, adjustable by hand wheel.

The machine has eight suspended brush rollers with food-grade, swell-resistant synthetic bristles for reliable performance. The rollers are ball bearing mounted, dynamically balanced and fully removable for maintenance.

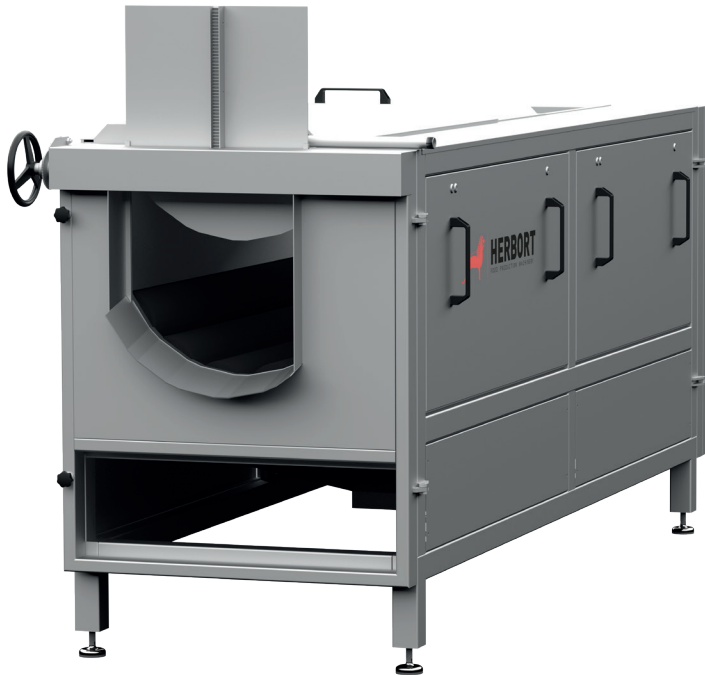
The 810 offers energy-efficient operation, powered by two electric geared motors (7 kW total) with a maintenance-free toothed belt drive. The machine's design includes splash guards, a connection for an extractor hood and easily accessible engine compartments for streamlined maintenance.

## Contact us

→ Call us: +49 (0)3 921 729 90 80  
→ Send an e-mail: [info@herbort-gmbh.de](mailto:info@herbort-gmbh.de)  
→ Visit our website: [www.herbort-gmbh.de](http://www.herbort-gmbh.de)

Herbort GmbH | D-39291 Hohlweg 3, Schermen

Subject to technical alterations



## Benefits

- ◆ Eight brush rollers ensure effective peeling and washing, even for hard-to-reach areas.
- ◆ Food-safe synthetic bristles and a stainless-steel frame ensure long-lasting performance.
- ◆ Removable covers and a central lubrication system simplify upkeep.

## TECHNICAL DETAILS

Total length	4200 mm
Total width	1250 mm
Total height	1800 mm
Number of brushes	8
Capacity	500 - 1.000 kg (depending on condition of product and desired cleaning density)
Power	7 kW

## Contact us

- Call us: +49 (0)3 921 729 90 80
- Send an e-mail: [info@herbert-gmbh.de](mailto:info@herbert-gmbh.de)
- Visit our website: [www.herbert-gmbh.de](http://www.herbert-gmbh.de)

Herbert GmbH | D-39291 Hohlweg 3, Schermen

Subject to technical alterations